



# Beverly Rotary Club Sprocket Newsletter

Aug 27, 2020  
Issue 9



# LAURA HITS HARD!



Frankly, I don't know what the big issue is here, I've been dealing with this particular weather issue for years. As well as three other storms: Hurricane Carla, Tropical Storm Ellen and Category 4 Storm Anne Marie. Suck it up and hunker down people this is real life!



Pay for lunch, happy dollars, or just a good old donation. Keep the dream alive  
<https://beverlyrotaryclub.ejoinme.org/MyEvents/COVIDRESPONSE/tabid/1143470/Default.aspx>



Michael C. Jones  
President

[www.mcjins.com](http://www.mcjins.com)

Phone 978-338-4670  
Fax 978-522-8388  
Mobile 978-828-5822

409A Cabot Street  
Beverly, MA 01915  
mike@mcjins.com

**Desjardins**  
E W E L E R S

**978-922-2149**

Commodore Plaza,  
47 Enon Street  
Beverly, MA 01915-3601

**TEMKIN**  
FINANCIAL GROUP, LLC



Alan L. Temkin  
Financial Planner  
781-876-4175  
atemkin@temkinfinancial.com

[www.temkinfinancial.com](http://www.temkinfinancial.com)

301 Edgewater Place, Suite 200  
Wakefield, MA 01880

Alan L. Temkin is a registered representative of and offers securities, investment advisory and financial planning services through MML Investors Services, LLC. Member SIPC. Temkin Financial Group, LLC is not a subsidiary or affiliate of through MML Investors Services, LLC, or its affiliated companies. 200 Clarendon Street, 19th and 25th Floor, Boston, MA 02116. 617-585-4500. CRN202111-256179



The leading provider of custom-designed  
workforce training programs.

NORTH SHORE COMMUNITY COLLEGE

**Corporate Training SOLUTIONS**  
*Train your people. Transform your company.*

Dianne Palter Gill, Ed.D.  
978-236-1225  
dpalterg@northshore.edu

[corporate.northshore.edu](http://corporate.northshore.edu)

**STERLING**  
INSURANCE AGENCY, INC.

Established in 1929 & Still Growing!

Auto • Home • Business • Health • Life

Richard F. Mooney Jr.  
president

306 Cabot Street, Beverly, MA  
(978) 922-6600

## Last weeks news, Thursday Aug 20th

At Al Temkin's direction, meeting Called to Order by President Marshall at 12:15

Pledge of Allegiance led by Leslie Gould (her first of many appearances/spots at today's meeting)

At Dianne's request despite her absence, the song was Woody Guthrie's version of This Land is Your Land

Invocation from Jack Good

Late-Comers: Bob Murphy

**Guests/Visitors:** None

**Birthdays:** Laura Cervizzi

### Announcements

Summary of Golf Tournament

Consensus was that it was a great collaboration between the Chamber and Rotary; so much so that we are doing it again next month (September 21)

Huge thank you to all of the golfers, sponsors, and supporters

The Committee has noted a couple of things to improve on but all in all it was a great success

Had 100 golfers; 70 tee sponsors  
Looks like we will reach the goal of \$10k for each organization

### Sergeant (Brian Murphy)

The effect of COVID on new terms such as Spew Ratio (Ed Cahill has spew radius of 3 feet while Dianne Palter-Gil has one of 40,000 hectares)

Things we should be happy for despite COVID: Thad, Dr. Jamie and Ju-

lian Edelman, Jackie Rap and Teachers, Rotary Garden and the Garden Committee, Reverend Julie for Zoom coffee hours, Reverend Duda for presiding over Matt & Stephanie's wedding despite missing out on the first kiss from Stephanie, Andrew DeFranza-newly engaged, Dylan Jones-new friend, Rachel Hand-happy with husband, Dianne Palter-Gil-being with her favorite husband

### Happy \$s

Matt Piaker-Referral and golf  
Dave Olson-Rotary Blood Drive having all 42 spots filled

Margaret Belmonte-sons being engaged to two great woman and both being home recently

Dr. Beckman-playing a gig with Horizon and the Horns

Jack Good-Pony Express delivering the roster books

Brian Dapice-Jerry Garcia without glasses

Rachel Hand-Learning how to golf and have fun at the golf tournament-first time on the golf course (the leader board may have already told us that though)

Walt-successful cataract surgery

Bob Murphy-Bass in the Grass Cop-perheaded Hoser being a large success

Sue Gabriel-600 Backpacks ready to be delivered

### How To Celebrate our 100 years

A whole host of ideas shared by many in attendance

If you want to be on the committee, then reach out to Jackie

Meeting Adjourned at 1:13  
Submitted by Ozzy

## True to our Communities



We are proud to support the  
Beverly  
Rotary Club

 Eastern Bank



## Deja Vu all over again

DON'T Adjust that newsletter, you are seeing double. Our first joint golf outing with GBCC was sooo good we're doing another one on September 21. This will be more low key without the hustle of shaking you down for money. This is more pure golfing joy, balloon animals and donkey rides. So get out your favorite golf hat, buff up those clubs and prepare they self for more fun than you can imagine. As before all proceeds will be split between our kissing cousin's over at GBCC and us. Benefit is that we BOTH make dough and we get to see(at a social distance) our friends at GBCC. Stay tuned for more details.

## 100th Year for Beverly Rotary

If you have any ideas of how we can celebrate our 100th year on this earth. At this point anything is fine. Send your idea to either Moiph or Jackie and we'll throw it in the hopper for further though. We are the largest club in our district, lets set the bar high for how to social distance ideas or anything else if we can.



## Worldwide Adventures of Handly



Oh my -- well, hello there. You startled me. And that reminds me of the time earlier this summer when I dropped my Pamplona in northern Spain. Yes, I had jetted in for the annual "running of the bulls" or as they say in Catalan correbous. This challenging footrace through a medieval downtown - older than Peabody even - challenges runners to outpace a pack of stampeding bulls. Now that might daunt even Dave Olson or at least prompt the question: who're running with, Dave? The bulls or the morons, I mean, mozos? Sure this centuries-old event is steeped in controversy but as Hemingway said, "Gawk what a hell of a show." (Carla, please remind me to add GAWK to my regular expressions.) Besides, the race offered me an opportunity to combine business with pleasure, as I was prepared to defend any runners who literally took the bull by the horns, which is explicitly forbidden and carries a heavy fine. Arriving in the city square at high noon, I found the place deserted. A few mozos moped around in their traditional running gear: white shirt (well, until it's doused in sangria), white pants, and a red handkerchief around the neck. As I had just disembarked from an overnight flight, I was still in my pajamas and held high my bota - a pigskin filled with wine, why didn't we think of that? Gawk (thanks Carla) the running of the bulls was cancelled this summer. I swiftly improvised "the running of the shopping carts" (funcionamiento de los carros de la compra) which thoroughly entertained the half dozen locals too dazed to come in from the noonday sun who over many a drained bota named me a damn fine fellow. And that's perhaps the first and last Handly Adventure that is completely bull-free. Till our paths cross again-

*Handly*



**Matthew H. Piaker,**  
JD, LLM, AIF®

Tel: 978-927-3123  
Email: mpiaker@cfaemail.com  
100 Cummings Center, Ste. 207P  
Beverly, MA 01915  
www.capitolfinancialadvisors.com



Securities and Advisory Services offered through Commonwealth Financial Network, Member FINRA/SIPC. Advisory services offered by Capitol Financial Advisors, a registered investment adviser, are separate and unrelated to Commonwealth.

## Montserrat College of Art

where creativity works®

visual art & design education  
continuing education for all ages  
public art galleries

beverly, ma | montserrat.edu

## Helping Local Businesses Thrive.

To contact one of our commercial lenders call (978) 573-1300 or visit [northshore-bank.com/lenders](http://northshore-bank.com/lenders).



Well north of your expectations.™  
[northshore-bank.com](http://northshore-bank.com) | [f](#) [t](#) [i](#) [n](#) [i](#) [a](#)

Member FDIC Member DIF Equal Housing Lender



**Edward F. Cahill, J.D., CFP®, CLU®, ChFC®**  
Financial Adviser  
(978) 927-9352 • 306 Cabot Street, Beverly, MA 01915  
[ecahill@ft.newyorklife.com](mailto:ecahill@ft.newyorklife.com) • [www.edwardfcahill.com](http://www.edwardfcahill.com)

Agent, New York Life Insurance Company.  
Registered Representative, offering securities through NYLIFE Securities LLC,  
Member FINRA/SIPC, a Licensed Insurance Agency  
201 Jones Road, Fifth Floor, Waltham, MA 02451 • Tel: 781-647-4100  
Eagle Strategies and NYLIFE Securities are New York Life Companies

# SHUKA Associates Inc.

Real Estate Appraisal, Appraisal Review & Consulting

**John A. Shuka, MAI, SRA, AI-GRS**

8 Enon Street, Suite 1B  
Beverly, MA 01915  
978-921-1700

[www.shuka-associates.com](http://www.shuka-associates.com)

## CCI Reprographics

A Full Service Copy Center  
AV Rentals & Services

Serving Beverly Since 1979

Alex Ushakoff III - owner  
4th generation Rotarian

110 Cabot Street 978-922-3773  
Alex@CCIREpro.com



**Good Food, Drink & Fun**

241 Jefferson Ave. Salem MA

[www.tinwhistlesalem.com](http://www.tinwhistlesalem.com) • 978-741-1912

## Beverly Insurance

100 Cummings Center  
Suite 106N

Personal and Business  
Insurance

**978-524-8501**

email:mike@beverlyins.com



Keep your facility clean and disinfected with  
JAN-PRO of Northeast Massachusetts.

**WE SPECIALIZE IN CLEANING & DISINFECTING:**

- Office Buildings
- Medical Facilities
- Daycares and Schools
- Restaurants
- Auto Dealerships
- ...and more!

**CALL FOR A FREE ESTIMATE!**

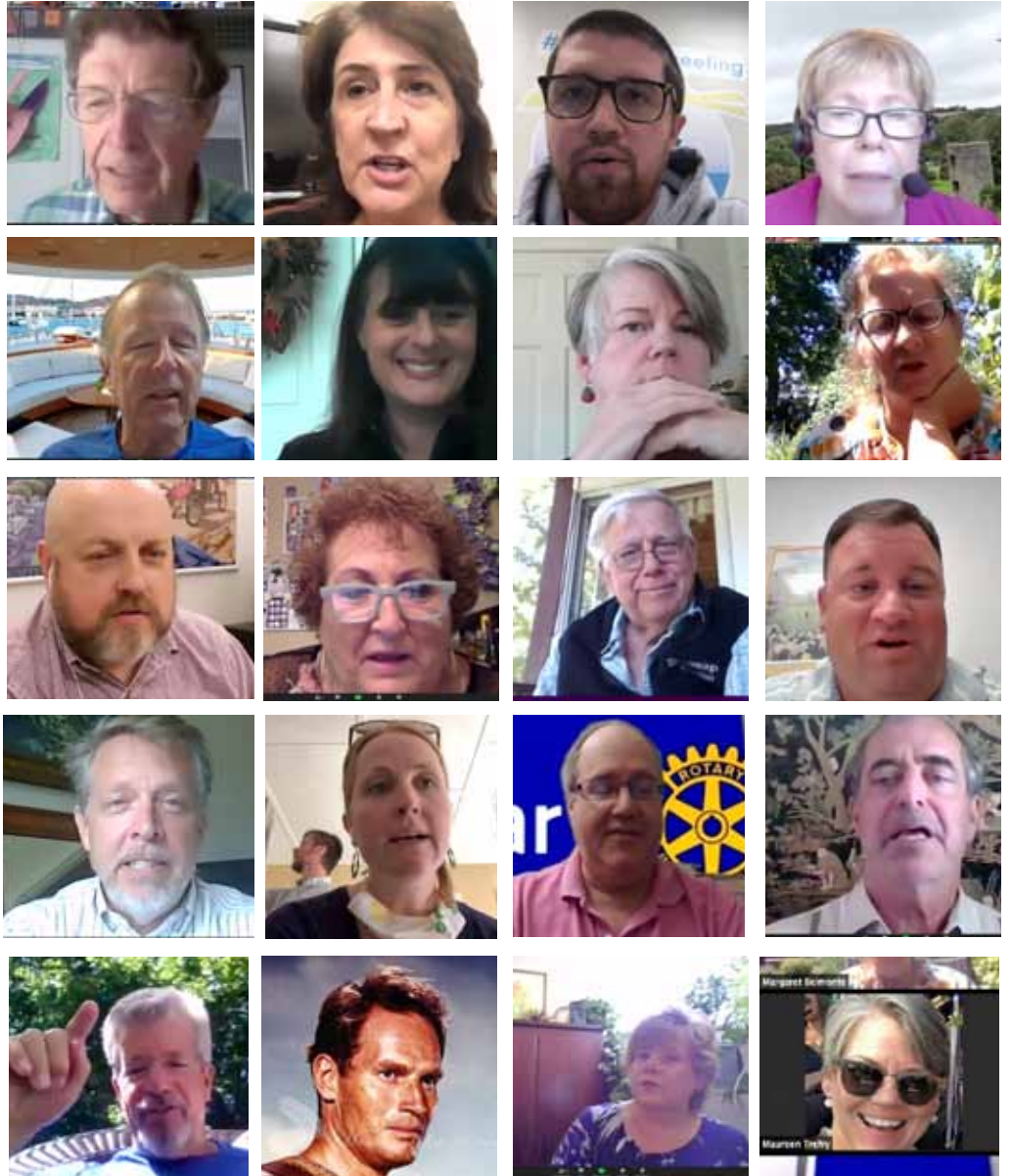
**781-482-7990 | [JAN-PRO.COM/MASS](http://JAN-PRO.COM/MASS)**



Mark Monahan  
Cleaning services provided by independently owned and operated JAN-PRO cleaning franchise.

## Here we go around the Zoom Pole

Images of last weeks meeting in living color. With a small crowd we didn't have as many grabs as we would have liked. I can only screen grab when you talk or cough or something else that puts you on the screen. We strive to bring you the worst possible pictures of you to remember in some future time when we can all be together. Only way to make this page is to speak up and I'll grab ya, so go ahead and talk, and I'll grab ya!



**Walter W Hartford, CFA**  
Financial Advisor

55 Market Street  
Suite 102  
Ipswich, MA 01938-2262  
978-356-3002

**Edward Jones**

MAKING SENSE OF INVESTING

[edwardjones.com](http://edwardjones.com)



**american family care®**  
**URGENT CARE**

50 DODGE STREET, BEVERLY MA 01915  
978.922.2171 | [AFCUrgentCareBeverly.com](http://AFCUrgentCareBeverly.com)

450 PARADISE RD, SWAMPSCOTT, MA 01907  
781.691.9366 | [AFCUrgentCareSwampscott.com](http://AFCUrgentCareSwampscott.com)